

Men's Pant Measurements

Please input measurements closest to the next 0.25 inch. Example, 24 1/8" rounds to 24 1/4" or 24.25
Input 24" as 24, 24 1/4" = 24.25, 24 1/2" = 24.50, 24 3/4" = 24.75

Trouser waist
Circumference



Measure just above the waistband (not on top of waistband or belt) to desired tightness.

Seat
Circumference

(from side, mark where this is taken)



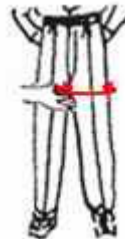
Measure around the fullest part of the seat (buttock), not tight.

Side Top waistband
to seat level distance



From the side, measure from top of waistband to level where seat circumference was measured.

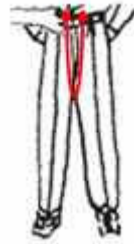
Thigh
Circumference



Knee
Circumference

Men's Pant Measurements Page 2

Total Crotch Length

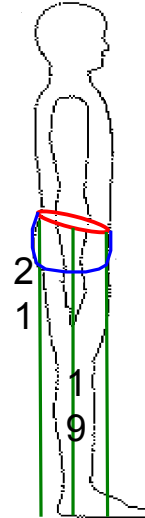


Ask client to hold tape at top of waistband on front, measure it to the back top of waistband, with desired ease around crotch. Make sure it is not too loose.

Side Length

Back Length

Front Length



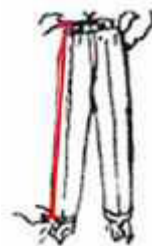
For side, front and back lengths, measure from top of waistband at each point straight to the floor. **No shoes.**

Inseam Length



Measure from crotch to floor. Make sure pant is pulled up to desired crotch, as some people wear trousers with too much fabric at the crotch. **No shoes.**

Side Length With Shoes

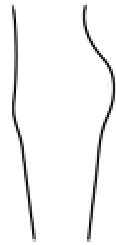


Now with shoes. From side, measure from top of waistband to desired length.

To help us make your pants with the best possible fit, select the picture that best describes your figure (optional).



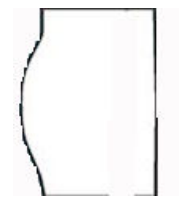
Normal Seat



Prominent Seat



Flat Seat



Full or Wide