

Neck Circumference



Measure around the neck where the collar sets to client's preferred tightness.

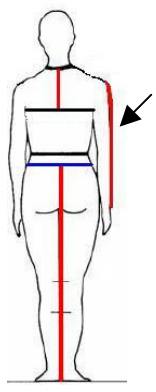
Point-to-point



Measure from shoulder bone to shoulder bone across the top.

Right Sleeve Length

Left Sleeve Length



Measure from shoulder bone to wrist joint.

Right Wrist Circumference

Over watch if any

Left Wrist Circumference

Over watch if any

Measure circumference at wrist joint. If wearing watch, measure over watch

Chest Circumference



Measure chest under arm and above bust

Bust Circumference



Measure around largest part of bust

Bust Position



Measure from shoulder seam to bust.

Bust to Bust



Measure from bust to bust.

Natural Waist Circumference



Measure circumference at natural waistline – the smallest part of the body

Shirt Length

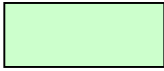
Measure shirt length from the back

Jacket Length



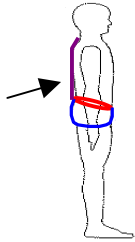
Measure from back neck to desired length

Jacket Sweep



Measure body circumference at the bottom of jacket length

Back of Neck to Top waistband



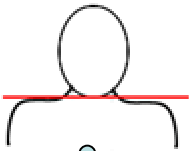
Measure from the most prominent neck bone to top of waistband

Seat Circumference

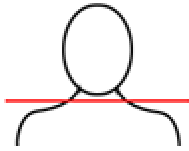


Measure around the fullest part of the seat (buttock), not tight.

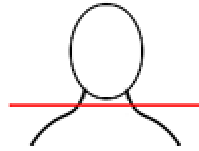
To help us make your shirt and jacket with the best possible fit, select the picture that best describe your figure (optional).



Square Shoulder



Normal Shoulder



Slope Shoulder